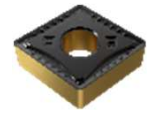
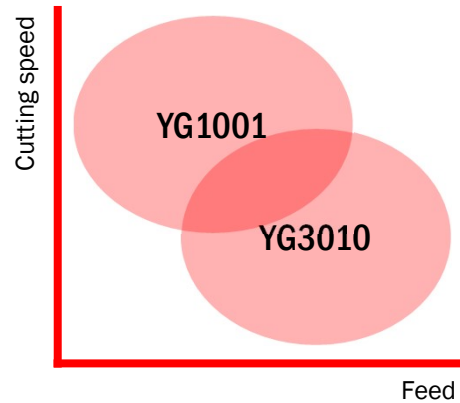


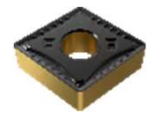
Strategy on Cast Iron Turning

YG-1 Inserts - Turning

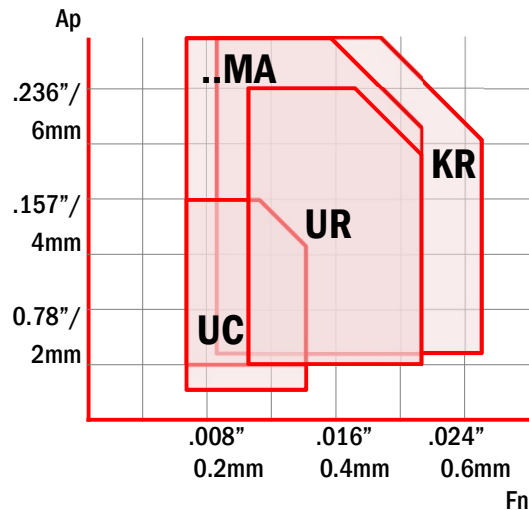
Cast Iron Grades



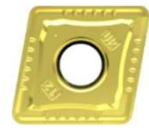
YG1001 cvd **P01-P10 K10-K25**
First Choice for Grey Cast Iron



YG3010 cvd **P05-P20 K15-K35**
First Choice for Ductile Cast Iron



-UC
General



-UR
Roughing



..MA
Non-Chipbreaker Type
For Grey cast iron



-KR
Heavy Roughing
Big K-Land